



# Stars of the SEA

VISITOR GUIDE  
& MAP

*Aquarium  
of the Pacific*

## General Information

Welcome to the Aquarium of the Pacific.

### First Aid/Emergencies/ Lost & Found

If possible, please proceed to Member Services near the main entrance, or contact the nearest staff member.

### No Smoking or Gum

Smoking, vaping, gum, and balloons are not allowed in the Aquarium. Please use trash and recycling bins. Do not toss objects into the exhibits.

### Visitor Information

Visit Member Services located in the Great Hall near the main entrance to inquire about boat tours, Aquarium membership, and special events.

### Dining and Refreshments

Café Scuba on level two serves a selection of sandwiches, salads, and grilled entrees, including sustainable seafood and vegan options. Bamboo Bistro in Shark Lagoon offers

pizza, hot dogs, cold beer, and refreshments. The Blue Whale Café in the Great Hall serves coffee, cappuccinos, sodas, and snacks.

### Restrooms and Baby Care Station

See map for restroom locations, including family restrooms. There are changing stations in all restrooms on levels one and two in the Great Hall and by Shark Lagoon. A baby care room is located off of the first floor women's restroom.

### Visitors with Disabilities

Wheelchairs are available at Member Services. All exhibits are wheelchair accessible. See map for the location of elevators throughout the Aquarium. Audio tours and Braille visitor guides are available. Special devices and Epson smart glasses are available for those with vision and hearing needs. Visit Member Services for details.

### Sensory Processing Needs

The Aquarium is certified by KultureCity as a facility that is inclusive of visitors with sensory processing needs. The Quiet Zone is marked on our visitor guide map, and Headphone Zones are marked with signs throughout the Aquarium. Visitors may check out sensory bags at the Member Services Desk. Visit [kulturecity.org](http://kulturecity.org) for information on this program.

### Aquarium Wi-Fi

The Aquarium offers free Wi-Fi throughout the facility. Select the network named AquariumWiFi. No password is required.

### Credit Cards

We accept VISA, MasterCard, Discover, and American Express.



*Please help the Aquarium achieve zero waste by disposing of all trash properly during your visit. Our trash bins are separated for trash, recyclables, liquids, and food waste, which is composted on-site.*

## Additional Adventures

Visit Member Services for times, pricing, and availability. For reservations, please call (562) 590-3100 or visit [pacific.to/visit](http://pacific.to/visit).

### Animal Encounters

Tour with an educator and interact with the animals and animal care staff. Age restrictions apply. Reservation required.

### Harbor Tours

Tour the Long Beach/Los Angeles Harbors with Harbor Breeze Cruises for a 45-minute narrated cruise around one of the most active ports in the world.

### Whale Watching

Explore our ocean backyard with an Aquarium naturalist to seek out local marine life such as whales, dolphins, sea lions, and migratory birds.

### Amazing Pictures

Purchase a unique souvenir of your Aquarium visit with this fun photo opportunity located in the Great Hall.

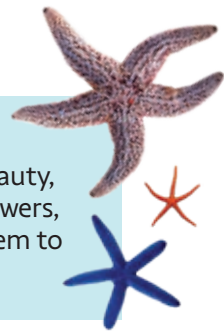
### Shows

Enjoy shows by educators at major exhibits. Download the Visitor App, or look for signs for times. Free with admission.



# Stars of the Sea

**Explore and celebrate sea stars with us.** Discover their delicate beauty, fascinating diversity, superhero powers, and the threats that could lead them to fade forever.



**3**

### Page Numbers

Look for the numbers on the exhibits, which correspond to the page numbers in this guide.



### Animal Touch

For the health and safety of our animals, use a gentle two-finger touch.



### Vanishing Animal

This symbol identifies animals that are threatened or endangered.



### Collect All Eight Embosser Animals

Check out the map to find the eight embossing stations. Emboss pages 7, 9, 11, 15, 19, 21, 23, & 29, and bring your visitor guide to the Member Services Desk for a free surprise. Supplies limited.



### Aquarium Map found on page 16

### Marine Species Report Card

Learn about the conservation status of 30 key local species and which ones need our help.



### Visitor Guide Mobile App

Download our app for show schedules, interactive maps, animal IDs, and more.



# Ocean Science Center

**3**

**The Ocean Science Center** uses the National Oceanic and Atmospheric Administration's (NOAA) Science on a Sphere® to tell stories about our planet. See the Ocean Science Center entrance for current schedule.

### Shows

Learn about environmental issues affecting the ocean and how you can take action. Watch movies featuring music, narration, and Spanish-language subtitles, or join an educator for an interactive exploration of Earth.



# Northern Pacific Preview

4

**Sea stars are invertebrates**, which are animals with no backbone. Over 2,000 sea star species live across the globe.



**BAT SEA STAR**  
*Patiria miniata*



**LEATHER SEA STAR**  
*Dermasterias imbricata*



**MOTTLED STAR**  
*Evasterias troschelii*



**RAINBOW SEA STAR**  
*Orthasterias koehlerii*



**SHORT-SPINED SEA STAR**  
*Pisaster brevispinus*



**OCHRE SEA STAR**  
*Pisaster ochraceus*



## Bull Kelp

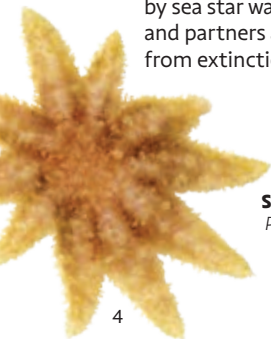
Bull kelp supports a rich community of seaweeds, invertebrates, and fish and is quickly disappearing. The Aquarium is preserving the genetic material of bull kelp for future restoration efforts.

**BULL KELP**  
*Nereocystis luetkeana*



## Sunflower Sea Star

Sunflower sea stars are the world's largest star reaching over two feet in diameter. These sea stars, along with others, have been decimated by sea star wasting syndrome. The Aquarium and partners are working to save them from extinction.

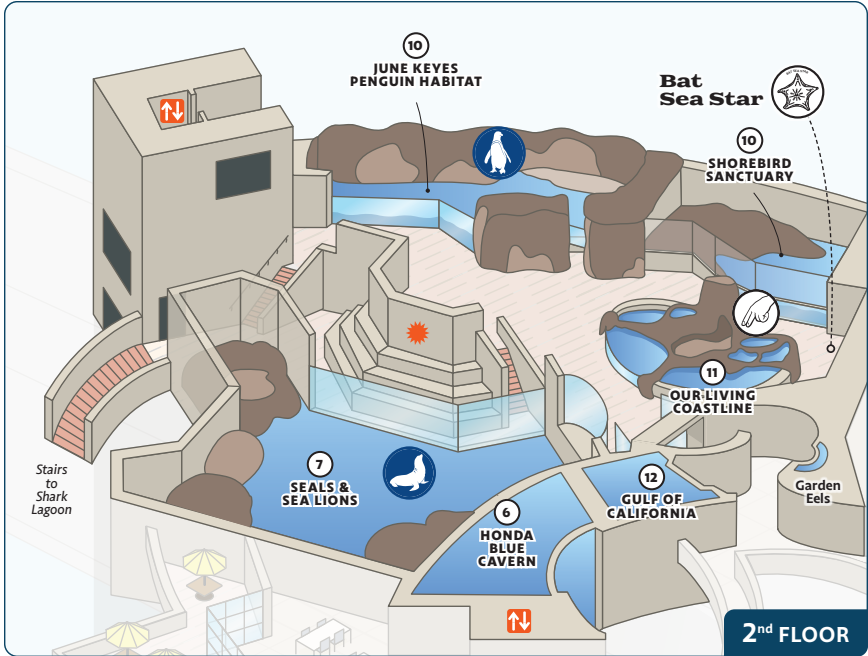


**SUNFLOWER SEA STAR**  
*Pycnopodia helianthoides*



# Southern California Gallery

This gallery represents the Southern California and Baja coasts, between Point Conception in Santa Barbara and the tip of Baja California, Mexico.



# Honda Blue Cavern

6



**GIANT SEA BASS**  
*Stereolepis gigas*



The Aquarium is part of a giant sea bass conservation program.

This exhibit is modeled after Blue Cavern, a marine protected area along the coast of Catalina Island.



**CALIFORNIA SHEEPHEAD (MALE)**  
*Semicossyphus pulcher*



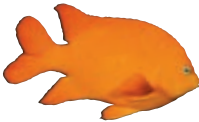
**LEOPARD SHARK**  
*Triakis semifasciata*

PRESENTED BY: **HONDA**  
The Power of Dreams

# Casino Point

6

The Casino Point exhibit represents the diverse marine life that depends on kelp forests. Some animals are easy to spot, while others hide in the kelp.



**GARIBALDI**  
*Hypsypops rubicundus*



**BLUE ROCKFISH**  
*Sebastes mystinus*



**BAT SEA STAR**  
*Patiria miniata*

# Abalone

6

The Aquarium has an abalone nursery. Along with partners, we are breeding endangered white abalone and releasing them off the coast to help avoid extinction.



**WHITE ABALONE**  
*Haliotis sorenseni*





# Marine Meadows

7

**Located in California coastal areas,** seagrass meadows serve as a nursery for juvenile fish, a natural barrier against coastal erosion, and a reservoir for carbon.



**SPINY SAND STAR**  
*Astropecten armatus*

# Seals & Sea Lions

7

**Seals and sea lions live throughout our coastal waters.** Although they spend most of their time in the ocean, they haul out on quiet beaches, rocks, or in the case of sea lions, structures like piers and buoys.



**HARBOR SEAL**  
*Phoca vitulina*



**CALIFORNIA SEA LION**  
*Zalophus californianus*



# Spiny Brittle Star

*Ophiothrix spiculata*

These stars live on the sandy bottom of the ocean, ranging from Northern California to Peru. Spiny brittle stars have five long, thin arms, and a small disk-shaped body. They hide under rocks or in crevices during the day and emerge at night to feed.



**Where is the mouth of the brittle star located?**

Find the answer at the exhibit.



# Harbor Terrace

8

**This outdoor space overlooks Rainbow Harbor** and features archerfish and mudskipper exhibits, along with the Moon Jelly Touch Lab. To get to Harbor Terrace, exit the rear doors of the Pacific Collections gift store or follow the walkway to the left of Lorikeet Forest.



**BANDED ARCHERFISH**  
*Toxotes jaculatrix*



**MOON JELLY**  
*Aurelia coerulea*

# Lorikeet Forest

8

**Our aviary is home** to more than seventy lorikeets native to Australia, Indonesia, and New Guinea. Purchase a small cup of nectar to feed to the lorikeets, and they might even land on your arm, shoulder, or head as you walk through the exhibit.



**SWAINSON'S LORIKEET**  
*Trichoglossus haematodus molocanus*



**GREEN NAPED LORIKEET**  
*Trichoglossus haematodus haematodus*

# Southern California Steelhead

8

**Southern California steelhead are members of the salmon family.** They reproduce in Southern California streams and have historically traveled up and down the Los Angeles, San Gabriel, and other local rivers to spawn and return to the ocean. After coming close to extinction, they were listed as an endangered species in 1997.



**SOUTHERN CALIFORNIA STEELHEAD**  
*Oncorhynchus mykiss*

# Our Water Future

8

**Learn more about where our water comes from and ways to conserve water in our daily lives.** See how you can save water at home with appliances, landscaping, and day-to-day activities.



# Shark Lagoon



9

Learn more about the importance of some of the ocean's top predators. Touch sharks and rays in this exhibit's two touchpools.



**BLACKTIP REEF SHARK**  
*Carcharhinus melanopterus*



**ZEBRA SHARK**  
*Stegostoma tigrinum*



**GREY REEF SHARK**  
*Carcharhinus amblyrhynchos*



**RETICULATE WHIPRAY**  
*Himantura uarnak*



**COWNOSE RAY**  
*Rhinoptera bonasus*



**BROWN-BANDED BAMBOO SHARK**  
*Chiloscyllium punctatum*



**EPAULETTE SHARK**  
*Hemiscyllium ocellatum*

**ATTENTION:** For the health and safety of our animals, please be gentle!



Where does the olive in their name come from?

Find the answer at the exhibit.

# Olive Ridley Sea Turtle

*Lepidochelys olivacea*

Olive Ridley sea turtles live in the Pacific and Indian Oceans and are the most numerous of the seven species of sea turtles. These turtles are omnivores, feeding mostly on invertebrates such as shrimp, sea jellies, lobsters, and crabs. They also prey on fish and will occasionally eat algae.



# June Keyes Penguin Habitat

10

Magellanic penguins native to South America are featured in this habitat. The Aquarium is part of an Association of Zoos and Aquariums breeding program for these birds, which maintains a healthy population under human care.



**MAGELLANIC PENGUIN**  
*Spheniscus magellanicus*



# Molina Animal Care Center

10

The Aquarium's Molina Animal Care Center includes a veterinary hospital, holding tanks, and animal habitats. Learn more about how we are helping sea otter pups at our Sea Otter Surrogate display.

## Sea Turtle Rescue and Release

The Aquarium has been rescuing and releasing sea turtles for 25 years. Look for turtles we might be caring for in the specialized tank.



The Molina Animal Care Center is funded by



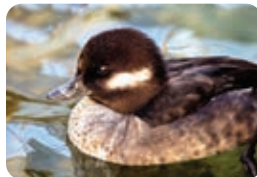
# Shorebird Sanctuary

10

Stroll the new boardwalk and discover a tidal wetland, which provides food, resting areas, and nursery grounds for birds and fish.



**WHITE-FACED IBIS**  
*Plegadis chihi*



**BUFFLEHEAD DUCK**  
*Bucephala albeola*



**AMERICAN AVOCET**  
*Recurvirostra americana*

# Our Living Coastline



11

Explore a California coastal tide-pool in this new exhibit featuring a life-like rock structure showcasing multiple touchpools, peek-through windows, and surging cascades.



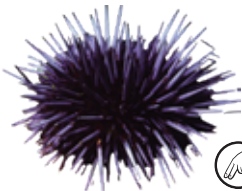
**OCHRE SEA STAR**  
*Pisaster ochraceus*



**GIANT GREEN SEA ANEMONE**  
*Anthopleura xanthogrammica*



**CALIFORNIA SEA CUCUMBER**  
*Parastichopus californicus*



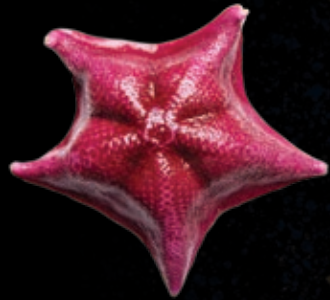
**PURPLE SEA URCHIN**  
*Strongylocentrotus purpuratus*



## Bat Sea Star

*Patiria miniata*

Bat stars live in rocky areas close to shore from Alaska to Baja California. These stars occur in many colors, including green, purple, red, orange, yellow, and brown. They are omnivores, scavenging on leftover food from other animals and algae. Like all sea stars, bat stars have hundreds of small tube feet, which allow them to move and grab food.



**How did bat stars get their name?**

Find the answer at the exhibit.

# Gulf of California

12

The Gulf of California is one of the world's most biologically productive and diverse seas. Learn about this important habitat and how we can help protect the animals that live there.



**GIANT DAMSELFISH**  
*Microspathodon dorsalis*



**STONE TRIGGERFISH**  
*Pseudobalistes naufragium*



**CORTEZ ANGELFISH**  
*Pomacanthus zonipectus*



**PANAMIC SERGEANT MAJOR**  
*Abudefduf troschelii*



**CORTEZ RAINBOW WRASSE**  
*Thalassoma lucasanum*



**MEXICAN HOGFISH**  
*Bodianus diplotaenia*



**LONGNOSE BUTTERFLYFISH**  
*Forcipiger flavissimus*



**SPOTFIN PORCUPINEFISH**  
*Diodon hystrix*

## Splendid Garden Eel

**Splendid garden eels use their tails to dig burrows in the sand.** They live in warm waters and feed on tiny animals that float by in the current.



# Northern Pacific Gallery

The Aquarium's Northern Pacific Gallery focuses on the colder waters and fascinating animals of the Bering Sea. Visit our sea otters, diving birds, the giant Pacific octopus, and sea jellies.



## Diving Birds

14

**These birds live** in the icy waters of the Northern Hemisphere and can fly in the air and swim underwater.



**TUFTED PUFFIN**  
*Fratercula cirrhata*



**HORNED PUFFIN**  
*Fratercula corniculata*



**PIGEON GUILLEMOT**  
*Cephus columba*

## Sea Jellies

14

**Sea jellies are found** in ocean waters around the world. They lack a heart, brain, and lungs, and have existed on Earth for at least 500 million years.



**PACIFIC SEA NETTLE**  
*Chrysaora fuscescens*

## Sea Otter Habitat

14

**The southern sea otter** is found along the California coast from Monterey to Santa Barbara. They were hunted to near extinction and still face threats. The Aquarium of the Pacific is working with the Monterey Bay Aquarium to help care for orphaned sea otter pups. Our adult sea otters are serving as surrogate mothers, teaching the pups how to survive so they can be released back to their ocean habitat.



**SOUTHERN SEA OTTER**  
*Enhydra lutris nereis*



# Sea Stars

15

**Sea stars come in many shapes, sizes, and colors,** eat a variety of foods, and live in various conditions from the deep sea to coral reefs. Some eat by filtering the water, others scavenge for food, and some hunt. They have a variety of “super-powers,” such as the ability to eject their stomachs to consume food and regrow arms that are lost. For a few species, the lost arm can even grow into a new sea star. As you explore the Northern Pacific Gallery, look carefully for the many types of sea stars.



**SAND STAR**  
*Luidia foliolata*

**SANDY BOTTOM EXHIBIT**



**GIANT-SPINED SEA STAR**  
*Pisaster giganteus*

**GIANT SPIDER CRABS EXHIBIT**



**SPINY BRITTLE STAR**  
*Ophiothrix spiculata*

**NORTHERN JEWELS EXHIBIT**



**PINK SEA STAR**  
*Pisaster brevispinus*

**GIANT SPIDER CRABS EXHIBIT**



**PACIFIC BLOOD SEA STAR**  
*Henricia leviuscula*

**GIANT PACIFIC OCTOPUS EXHIBIT**



**VERMILION SEA STAR**  
*Mediaster aequalis*

**DEEP WATER EXHIBIT**

## Basket Star

*Gorgonocephalus eucnemis*

Basket stars are found in a large geographic range, including Japan, Alaska, Greenland, and Southern California. They live in deep sea habitats as well as shallow tropical reefs. Basket stars uncurl their arms to catch their food: plankton that drifts in the current.



**How did basket stars get their name?**

Find the answer at the exhibit.

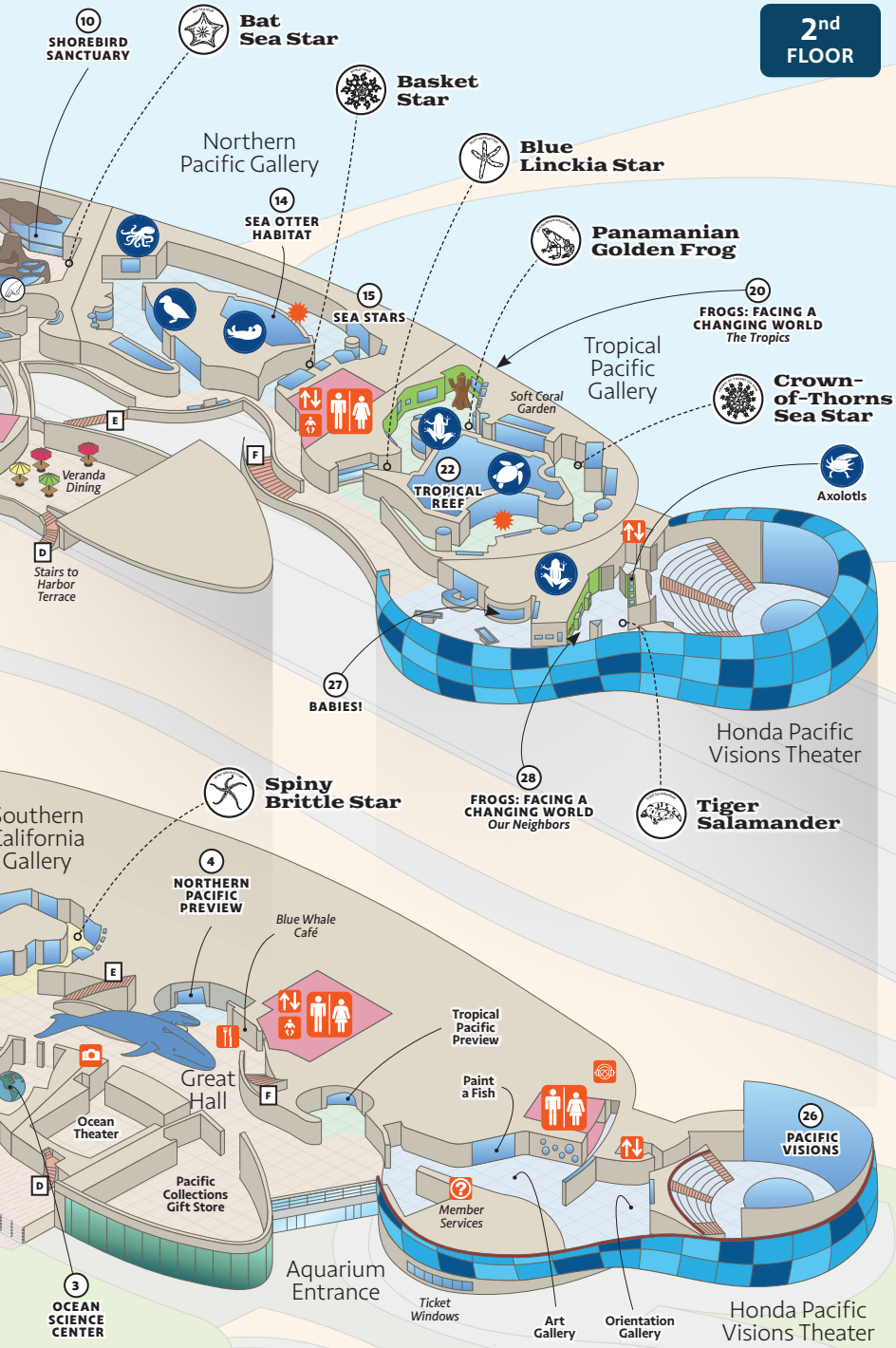
LEGEND

	RESTROOMS		ELEVATORS
	DINING		AMAZING PICTURES
	INFO		QUIET ZONE
	CHILD CARE STATION		SHOW
	TOUCH AREA		10 PAGE NUMBER
	EMBOSSERS		A STAIRS

EXHIBIT MAPS

Find detailed gallery maps on pages: 5, 13, 18, & 25





# Tropical Pacific Gallery

The Aquarium's Tropical Pacific Gallery represents many tropical habitats, including Indonesia and the island nation of Palau, the western-most section of Micronesia.



# Coral Lagoon

19

Between the shore and the outer barrier reef, coral lagoons provide protected areas to serve as nurseries for young fish. In these shallow waters, fish can hatch and grow while safe from predators.



**YELLOW TANG**  
*Zebrasoma flavescens*



**GRANULATED SEA STAR**  
*Choriaster granulatus*

# Coral Rescue

19

The U.S. Fish and Wildlife Service occasionally confiscates illegally traded live corals. The Aquarium of the Pacific provides a home for some of these corals in our exhibits.



**RED LINCKIA STAR**  
*Linckia multifora*



**SCROLL CORAL**  
*Turbinaria reniformis*

# Blue Linckia Star

*Linckia laevigata*

Blue linckia sea stars are found in the Indo-Pacific in shallow coral reefs. They are commonly blue in color but can also be purple and orange. Like all sea stars, these are powered by water. They draw water into their bodies through a small hole on top. The resulting change in pressure moves their tube feet.



What do these stars eat?

Find the answer at the exhibit.

## The Tropics

# Frogs: Facing a Changing World

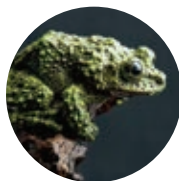
20



**GOLDEN  
MANTELLA**  
*Mantella aurantiaca*



**MAGNIFICENT  
TREE FROG**  
*Litoria splendida*



**MOSSY  
FROG**  
*Theleoderma  
corticale*



**SOLOMON ISLAND  
LEAF FROG**  
*Ceratobatrachus  
guentheri*

**Leap into the colorful, strange, and rapidly changing world of frogs and their amphibian relatives.** Discover vibrant habitats featuring colorful tropical frogs from around the world and peek into a behind-the-scenes nursery in our Tropical Pacific Gallery. Learn about the diversity of species and their unique adaptations, the threats they are facing, and how the Aquarium is helping to save them from extinction.

### Solomon Island Leaf Frog

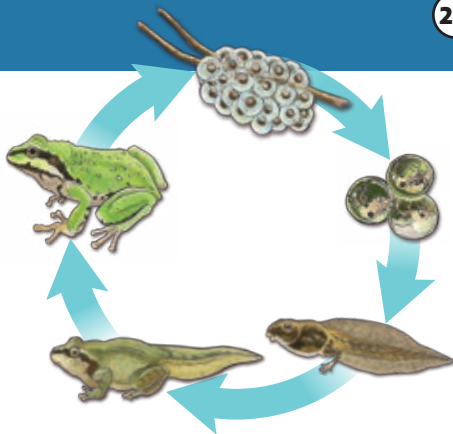
These frogs are native to the Solomon Islands and Papua New Guinea. Their name comes from their ability to camouflage in fallen leaves. They average three to four inches, and feed on insects and smaller amphibians.

Their lifespan in the wild is unknown, but they can live three to five years in protected environments.

## Frog Nursery

20

**Frogs experience a spectacular range of changes in their life cycle.** Most species lay eggs that hatch into tadpoles that swim underwater and breathe through gills. These tadpoles slowly transform in many ways, including growing legs, and become froglets. Once the tail is absorbed, they become adult frogs.



# Poison Dart Frogs

21

**These colorful frogs** secrete a poison that can be fatal to humans. The poison is not produced by the frog, but rather comes from the food they eat. Some poison dart frogs tap their toes while hunting. It is believed this makes their prey move, so the frogs can see them better.



**GREEN AND BLACK POISON DART FROG**  
*Dendrobates auratus*



**RED-BACKED POISON FROG**  
*Ranitomeya reticulata*



**YELLOW-BANDED POISON DART FROG**  
*Dendrobates leucomelas*



**BLUE POISON DART FROG**  
*Dendrobates tinctorius 'azureus'*

## Panamanian Golden Frog

*Atelopus zeteki*

The Panamanian golden frog is native to Panama. This frog is critically endangered due to the chytrid epidemic, a fungal disease that has impacted amphibians. Panamanian golden frogs are considered extinct in the wild, but are part of an Association of Zoos and Aquariums species survival program.



Do these frogs have toxic skin like poison dart frogs?

Find the answer at the exhibit.



# Tropical Reef

22

The Tropical Reef Habitat is the Aquarium's largest exhibit, containing 367,000 gallons of saltwater. This habitat features colorful fish, rays, sea turtles, and zebra sharks that live among the beautiful artificial coral.

## ZEBRA SHARK

*Stegostoma tigrinum*



## REDTOOTH TRIGGERFISH

*Odonus niger*



## REDBELLY YELLOWTAIL FUSILIER

*Caesio cuning*



## ORBICULATE BATFISH

*Platax orbicularis*



## SERGEANT MAJOR

*Abudefduf vaigiensis*



## BLUE TANG

*Paracanthurus hepatus*



## BLUESPINE UNICORNFISH

*Naso unicornis*



## OLIVE RIDLEY SEA TURTLE

*Lepidochelys olivacea*





**QUEENSLAND GROUPE**

*Epinephelus lanceolatus*



**GOLDEN TREVALLY**

*Gnathanodon speciosus*



**BLUEFIN TREVALLY**

*Caranx melampygus*



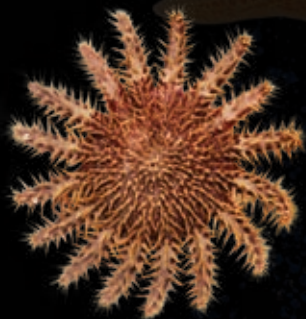
The Aquarium helps to rescue and rehabilitate local sea turtles.



## Crown-of-Thorns Sea Star

*Acanthaster planci*

The crown-of-thorns sea star can be found in the Indo-Pacific in coral reefs. These sea stars can reach nearly a foot and a half in diameter and eat coral. With few predators, population booms of these stars can destroy coral reefs.



**How many arms can these stars have?**

Find the answer at the exhibit.



# Hidden Potential

24

**Losing coral reefs to pollution, overfishing, and climate change** would mean losing potential benefits that have yet to be discovered. They protect coastlines from storm surges and provide us with food. They may be the source of new medicines.



**YELLOW FEATHER STAR**  
*Comatella stelligera*



**CHOCOLATE CHIP STAR**  
*Protoreaster nodosus*

# Glowing Reef

24

**Some corals absorb blue and ultraviolet light** and then emit lower-energy fluorescent light. Fluorescence is a sign that corals are healthy. The color shift might work like sunscreen to protect the delicate corals in shallow waters.



**CABBAGE CORAL**  
*Sinularia brassica*



**TWO-LINED MONACLE BREEM**  
*Scolopsis bilineata*

# Tentacles & Ink

24

**Octopuses are amazing invertebrates with eight arms.** They have the ability to change shape, color, and texture, and squirt ink.



**COMMON OCTOPUS**  
*Octopus vulgaris*



**BLUE GREEN CHROMIS**  
*Chromis viridis*

# Coral Restoration

24

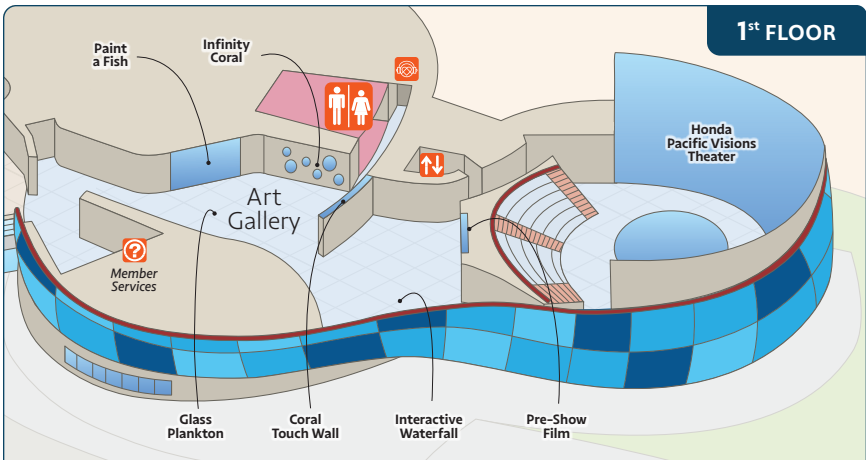
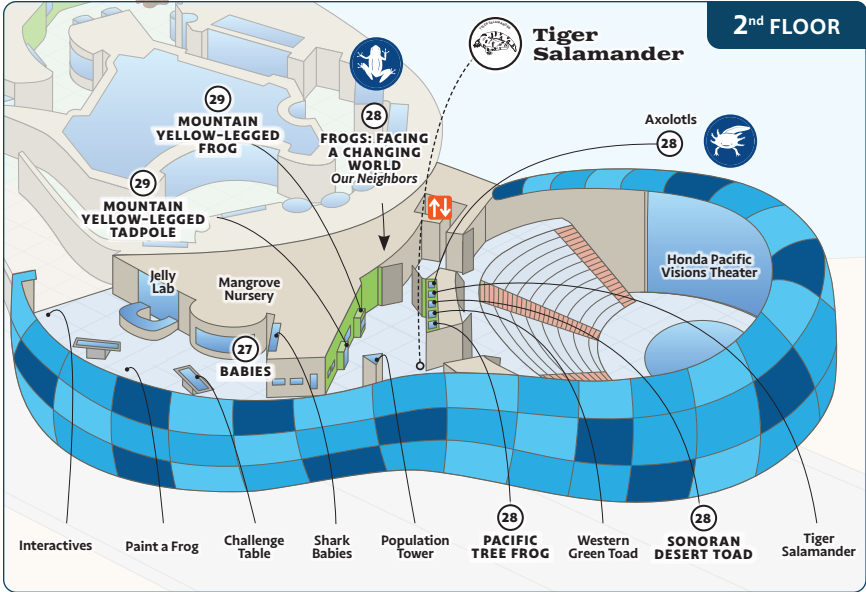
**The Aquarium partners** with international organizations to help rebuild coral reefs.



# Pacific Visions

25

Learn about our relationship with our planet through high-tech multimedia interactives, art installations, animal exhibits, and shows.



## LEGEND



ELEVATORS



RESTROOMS



QUIET ZONE



INFO



PAGE NUMBER



EMBOSSER

# Honda Pacific Visions Theater

**This unique theater** uses a massive curved screen, floor projection, and multisensory effects to explore ideas for creating a sustainable future for all. The theater is also used for performances, evening events, and more.

## Art Gallery

Explore underwater worlds of corals, planktons, and sea stars through video projections, soundscapes, and sculptures, including some you can touch. Digitally paint a fish and send it to swim in a virtual coral reef projection.



© 2019 TOM BONNER



© 2019 TOM BONNER

# Theater Shows

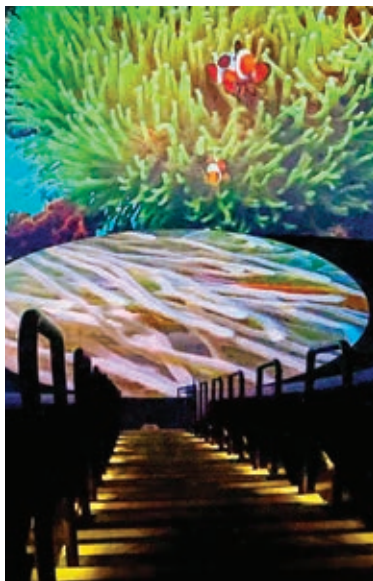
## Coral Reefs

Experience a stunning virtual coral reef dive in the show, *Our Future is in Cities: On Land and In the Ocean*. Explore the diversity of coral reefs and how we can protect them.

## Love & Life Behind the Glass

Experience the story of how our staff members care for our seals and sea lions.

See other shows in rotation on Aquarium animal care and conservation topics. Shows are rotated and shown throughout the day.



# Babies!

27

**Discover the key to our future as you learn about our baby animals,** their fascinating behavior and biology, how we care for them, threats to their survival, and what their future means for their species and our ocean planet.

**WHITE'S SEAHORSE**  
*Hippocampus whitei*



## Jelly Lab

See how we culture baby sea jellies at the jelly lab. Discover the early stages of their life cycle from little larvae, to growing polyps, to tiny jellies.



## Ocean Nurseries

Some ocean habitats serve as nurseries for baby animals by providing protection from predators and rough seas. Explore exhibits that represent ocean nurseries, including mangroves, coral reefs, and seagrass beds. Meet the babies that grow up there.

# Frogs: Facing a Changing World

Our Neighbors

28

**Frogs and amphibians** have adapted to a variety of habitats around the world, from the Arctic to the desert and right here in Southern California.



**SONORAN DESERT TOAD**  
*Incilius alvarius*



**AXOLOTL**  
*Ambystoma  
mexicanum*



The axolotl is a salamander that remains in its juvenile stage its entire life. It retains its gills, tail, and a body fin. It can regrow its limbs and other body parts. Axolotls can reach up to 18 inches long and eat worms, mollusks, crustaceans, insect larvae, and small fish. It only lives in a few lakes and canals of southern Mexico City. The Aquarium serves as a home to several axolotls that were rescued from wildlife trafficking.

Sonoran desert toads are found in the shrublands, grasslands, and wetlands of Mexico and the southwestern United States. They are greenish gray to dark brown, which helps them blend into their surroundings. They are mostly nocturnal and feed on spiders, insects, lizards, mice, snails, and other amphibians. They have been known to live for over fifteen years.



**PACIFIC  
TREE FROG**  
*Pseudacris regilla*

The Pacific tree frog is found from Northern California to British Columbia. This frog is usually green but can change its skin color to better match its environment throughout the seasons. Although called tree frogs, Pacific tree frogs prefer a ground habitat among shrubs or grasses near water.



ROBIN RIGGS

## Top Threats

-  **Climate change**
-  **Habitat destruction**
-  **Chytrid fungal disease**
-  **Invasive species**
-  **Pollution**
-  **Over-harvesting or collecting**

# Mountain Yellow-Legged Frog

29



The Aquarium of the Pacific is helping to save mountain yellow-legged frogs (*Rana muscosa*) from extinction after their populations were decimated by wildfires. We are part of a program to breed, rear, and release these frogs back to our local mountains.



ROBIN RIGGS

## Tadpoles

The Aquarium has built specialized systems to house mountain yellow-legged tadpoles to ensure ideal conditions during their up to four-year transition to frogs. Once these frogs reach adulthood, they will be transported in special coolers and released high in the San Gabriel or other local mountains to establish new populations.

29

# Tiger Salamander

*Ambystoma tigrinum*

The tiger salamander is the largest terrestrial salamander in North America, growing up to 13 inches long. They begin their lives in water, later metamorphosing into air-breathing adults. Tiger salamanders have specialized foot pads used for burrowing.



**How long do these salamanders live?**

Find the answer at the exhibit.



# What You Can Do

**When you care for the ocean planet,** you can help sea stars and all animals.



## Reduce Your Carbon Footprint

Conserve energy and reduce your use of fossil fuels. Walk, bike, carpool, or take public transit whenever possible.



## Respect Nature

Stay on designated trails and keep your distance from wildlife. This protects habitats and prevents disturbing animals' natural behaviors.



## Conserve Water

Instead of lawns, plant low-water landscaping. Reduce water use inside your home with shorter showers and wash only full loads of laundry and dishes.



## Be a Responsible Pet Parent

Do your research prior to adopting any birds, fish, amphibians, reptiles, or invertebrates like sea stars to avoid contributing to unsustainable or illegal wildlife trade. Avoid protected, threatened, or vulnerable species by doing a web search; acquire them from a reputable vendor and ask where the animal came from; and ensure you have the knowledge and resources to properly care for the animal.



## Reduce Consumption, Recycle, and Keep Trash Out of Nature

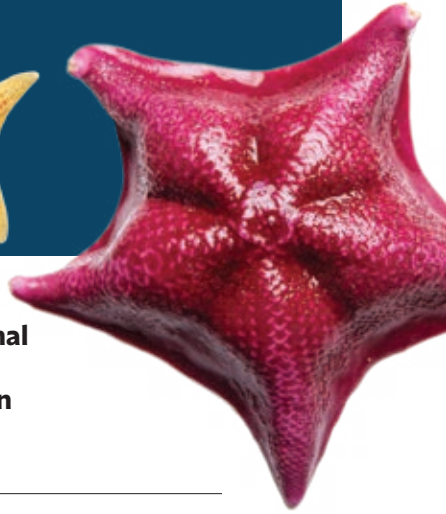
Rethink what you use to produce less trash. Choose reusable items like water bottles and recycle when possible. Keep trash off the street to prevent it from entering natural areas, waterways, and the ocean. Participate in cleanups.



## Become an Advocate

Learn more about how you can help support local nature organizations, educate others, and contact your political representatives.

# Thank You Donors!



Did you know that your Aquarium is a non-profit organization with educational outreach programs and conservation efforts that ripple throughout Southern California and beyond?

## Your gifts support

**61**  
**SCHOLARS**

in higher education through the **African American Scholars** and **CELP programs**

**90,000**  
**STUDENTS**

served annually, **16%** funded by scholarships

**420+**

**YOUTH VOLUNTEERS**

contributing **25,275+** hours in 2024

**6,500**  
**(AND COUNTING)**

**K-8 students** reached in our local Long Beach community by our no-cost **Mobile Ocean Classroom**



## Conservation programs

- Sea Otter Surrogacy | **page 14**
- Mountain Yellow-Legged Frogs | **page 29**
- Sunflower Sea Stars | **page 4**
- Giant Sea Bass | **page 6**
- White Abalone | **page 6**
- Bull Kelp | **page 4**
- Sea Turtles | **page 10**



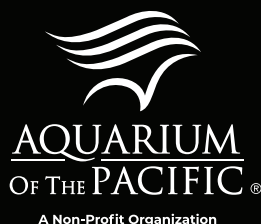
**Donate today!**  
**Scan the code to support your Aquarium or learn more at [aquariumofpacific.org/give](https://aquariumofpacific.org/give)**

# Connecting to and Conserving Nature

The Aquarium of the Pacific is a non-profit education and conservation organization committed to understanding, protecting, and restoring Southern California's coast and ocean and providing compassionate care to our more than 12,000 animals. Visit our website to learn more and support our efforts.

Aquarium Founding Sponsor

**HONDA**  
The Power of Dreams



**100 Aquarium Way  
Long Beach, CA 90802**  
[aquariumofpacific.org](http://aquariumofpacific.org)

Open 9:00 a.m.–6:00 p.m.  
daily except Christmas Day

## Land Acknowledgment

We recognize that the Aquarium is on Tongva land. We honor and extend our gratitude to the Tongva people and the many other indigenous groups who call this land home.

**ASSOCIATION  
OF ZOOS &  
AQUARIUMS**

## Membership

Enjoy the Aquarium in the best way possible—as a member! Members receive unlimited free admission for twelve months in addition to exclusive access, special discounts, and so much more. Beyond the valuable benefits, your membership support also helps protect the ocean and its inhabitants. Memberships available for individuals, families, and companies.

## Education

The Aquarium of the Pacific hosts a variety of engaging programs and events on-site and virtually for adults, families, and children.

## Volunteer

Do you want to make a difference? The Aquarium depends on volunteers to help us achieve our mission of ocean education and conservation. They are most of the staff you meet during your visit.

## Gift Stores

Be sure to stop by our gift stores for a unique selection of gifts, toys, books, educational items, housewares, clothing, and art.

## Adopt an Animal

You can adopt an animal to help support the care of our Aquarium family. In return, you receive an adoption certificate, animal updates, and much more.

## Special Events

Host your wedding, family reunion picnic, corporate party, or other special events at the Aquarium.

## AQUARIUM MISSION

To instill a sense of wonder, respect, and stewardship for the Pacific Ocean, its inhabitants, and ecosystems.

## AQUARIUM VISION

Foster an inclusive community that works together to create our sustainable future.

During your visit, you may be filmed, videotaped, or photographed by an Aquarium of the Pacific employee, volunteer, or contract service professional. Your admission to our facility serves as permission for use of your image by the Aquarium of the Pacific and its constituents. The commercial use of photographs, video, and film you may have taken during your visit is strictly prohibited without the full written consent of the Aquarium of the Pacific.